



INTRODUCING THE ALL-NEW U4K DASHCAM



Self update via the phone app

The U4K provides a solution to the issue of updating software-based devices. This is achieved by enabling easy firmware updates for the dashcam and delivering FREE speed camera updates through our app.



“Cyclops” speed camera alerts

Included **free** of charge! Voice commands “You are approaching... a possible speed camera. **OFF by default**, turn on in settings. It includes both fixed and mobile hot spots. Free updates are issued twice a year through the mobile app. Please be aware that there is no legal recourse in case of discrepancies. This information is intended as a guide and cannot be entirely relied upon for precise, up-to-date camera locations.



4k (8mp) Sony Starvis image sensor front and Sony FHD rear

Industry-standard Sony Starvis and Starvis 2 image sensors are used for both front and rear cameras.



An easier to connect app that opens with a help screen!

Open app and it automatically takes you to your wifi connections.... with a help screen – navigate quickly.



Emergency record feature is back!

Simply press the middle panel button for 3 sec until it starts flashing (blue light) and 30 seconds is bookmarked (recorded) 10 seconds before and 20 seconds after. Footage also gets stored separate folder.

“Shortcut” buttons for formatting, voice recording, voice guidance and more

U4K series shortcuts (panel buttons)

VOICE 1

RECORD 2

WIFI 3

- Press **Voice** and **Wi-Fi** buttons together for SD card format (use this to wipe recordings before delivery).
- Press **Voice** one second for audio record on/off.
- Press and hold **Voice** button to turn voice guidance on/off – it will tell you it has changed.
- Press **Record** button to manually record a 30-second video.
- Press the **Wi-Fi** button to turn **Wi-Fi** on/off manually.





GPS mapping is now in the app

You can instantly download videos and review where you were without needing to use a computer.



Built in GPS antenna for neater installs

The GPS antenna is an extra part on most dashcams including our current UVUE range, with the U4K it is built in so one less component is mounted on the windscreen.



Video Editor in App!

Grab footage to 'use' without taking the SD card out. Share with your insurance etc via the app too!



Parking mode time:

Parking mode time can be set between 3 and 48 hours. The default is 3 hours. Irrespective of this setting the camera will still turn off at the preset voltage. If set to 'off', parking mode will run until the low battery limit is reached. Time period or voltage – whichever comes first!

Parking record "auto":

Needs to be set to 'on' for normal ignition-controlled parking mode. If 'off' then parking mode is removed.

Parking record:

Recording in parking mode can be set to "Motion", "Time Lapse" or "Low power mode".

1. **Motion:** In this mode the camera will only record **movement**, it is the **default setting** and what our previous cameras had as the only option.
2. **Time Lapse:** In this mode the camera will record 1 FPS (frame per second) continuously until parking mode ends. This allows for a MUCH **BIGGER loop** – 1 hour becomes 30 hours however the trade-off is recording 1 frame per second reduces the level of detail captured – **its like watching a video in 6x mode..** Time Lapse may suit overnight parking on a busy street.
3. **Low Power Mode – Airport Mode:** In low power mode the camera turns off when parking mode starts and does not record. The camera will instantly wake up and record if impact is detected. This mode is designed for longer park mode recording like when you have left your car at the airport – can possible extend for over a week. The impact needs to be a substantial impact not a very light/gentle bump to record.



Driving record:

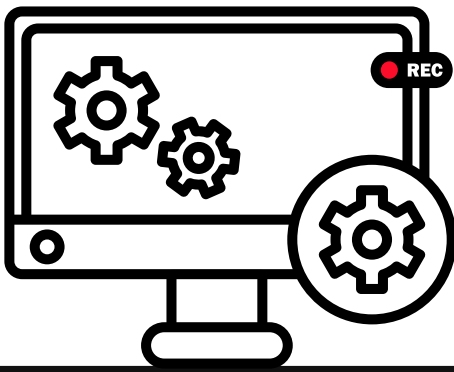


In driving mode the camera can do either normal 30 FPS or Time Lapse at 1 FPS. If usual recording loop is 3 hours this is extended to a 90 hour recording loop! Great for a long trip or a day out 4 wheel driving and want to see footage for the whole day. It is like watching a video in 6x mode.



LOW power Mode: (Airport Mode)

In low power mode, the camera turns off when parking mode starts and does not record the camera will instantly wake up and record if impact is detected this mode can miss very gentle bumps, but has the advantage of parking mode being able to monitor for a much longer time frame than traditionally possible....for days, even weeks.



UVUE PLUS SETTINGS MENU – V1



Image quality: HIGH

Image quality can be set to high (default), medium or low. The higher the image quality the more memory card space is used.



Voltage cut-off: 12.3V

This is the battery voltage at which the camera turns off regardless of how long the parking mode time is set for. The default is 12.3v but can be set for between 12.0v and 12.5v. Lower voltage equals longer parking mode time but may cause problems in cars with poor batteries. A higher setting is recommended for hybrids and EV's.



Parking mode time: 3Hours

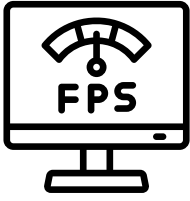
Parking mode time can be set between 3 and 48 hours. At present the default is 3 hours. **Irrespective of this setting the camera will still turn off at the preset voltage.** If set to 'off', parking mode will run until the low battery limit is reached. Time period or voltage – whichever comes first!



Parking record: Motion Recording

Recording in parking mode can be set to "Motion", "Time Lapse" or "Low power mode".

1. **Motion:** In this mode the camera will only record movement, it is the default setting and what our previous cameras had as the only option.
2. **Time Lapse:** In this mode the camera will record 1 FPS (frame per second) continuously until parking mode ends. This allows for a MUCH BIGGER loop – 1 hour becomes 30 hours however the trade-off is recording 1 frame per second reduces the level of detail captured – its like watching a video in 6x mode.. Time Lapse may suit overnight parking on a busy street.
3. **Low Power Mode – Airport Mode:** In low power mode the camera turns off when parking mode starts and does not record. The camera will instantly wake up and record if impact is detected. This mode is designed for longer park mode recording like when you have left your car at the airport – can possible extend for over a week. The impact needs to be a substantial impact not a very light/gentle bump to record.



Driving record: FPS

In driving mode the camera can do either normal 30 FPS or Time Lapse at 1 FPS. If usual recording loop is 3 hours this is extended to 90 hours! Great if your going on a long trip or a day out 4 wheel driving and want to see footage for the whole day. its like watching a video in 6x mode.



LOW power Mode: (Airport Mode)

In low power mode, the camera turns off when parking mode starts and does not record the camera will instantly wake up and record if impact is detected this mode can miss very gentle bumps, but has the advantage of parking mode being able to monitor for a much longer time frame than traditionally possible....for days, even weeks.



HDR:

HDR is "High Dynamic Range" – which means it can record better in low light situations. With HDR on the camera can record high contrast situations better but at the cost of motion recording accuracy. The default is off.

Rear recording:

Rear camera can be set to on or off.

Drive impact:

Drive impact can be set to high, medium or low. The default is low so as to not record every bump in the road as an event

Parking impact:

Parking impact can be set to high, medium or low. The default is high.

Front motion:

Front motion sensitivity can be set to high, medium or low. The default is medium.

Rear motion:

Rear motion sensitivity can be set to high, medium or low. The default is medium.

Voice recording:

Voice recording can be set to on or off. The default is off. Voice recording can also be turned on or off from the buttons on the camera body.

Speaker volume:

Speaker volume can be set between off ~ three. The default is two

Standard time:

Time zone setting is GMT + 10 hours

Daylight saving time:

Selecting daylight saving time will compensate for daylight saving time without the need to alter the time zone – it will be automatically updated.

Time setting:

This allows for manual time setting.

Memory allocation:

Memory allocation can be set for Driving priority, Parking priority, Event priority or Driving only. This allocated the largest folder (memory space) according to the customer's choice. The default is Driving priority.

SD card format

Allows for manual wiping of the memory card and will remove all recordings. This can also be done through the buttons on the camera body – great for just before deliveries!

If the SD card is faulty/full, it will say 'No memory card.'

Security LED:

The camera can be set to automatically turn on WiFi in driving mode. The default is on.

Speed unit:

MP/H or **KM/H (default)**

Safety camera alert – Fixed Speed Camera:

The safety camera alerts you to the presence of a fixed-speed camera. It can be turned on or off. The default is off.

Safety camera mobile Mobile Speed Camera:

When turned on in addition to fixed camera location the camera will report known mobile camera locations.

FIXED AND MOBILE SPEED CAMERA - Please note!

Camera locations provided are for guidance purposes only and may not be 100% guaranteed to be accurate or up-to-date.

WiFi app:

This is the SSID or camera WiFi identification code.

Change password:

The dashcam's default password can be changed to any combination of numbers and letters between eight and sixteen characters long. **Default 12345678**

Firmware update:

Like a mobile phone, the app will download firmware updates and you can install then from this setting.

Safety camera DB update:

Safety camera data base is updated every six months and the update will be downloaded by the app and can be installed from this setting.

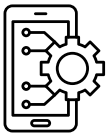
System information:

This will provide the camera model, firmware version and safety camera data base version.

Reset:

Allows for a factory reset, all settings will be returned to the factory defaults.

This does not wipe recordings, only settings.



FACTORY SETTINGS: DEFAULT

Image Quality	HIGH	SD Card Format	
Voltage Cut-off	12.3V/24.V	Security LED	On
Parking mode time	3 Hours	Speed Unit	KM/H
Parking Record Auto	On	Wi-Fi Auto-On	On
Parking Record	Motion Recording	Safetycamera Alert	Off
Driving Record	Normal Record	Safetycamera Mobile	Off
Low Power Mode	Off	W-Fi AP	2-QHD_9f55de
HDR	Off	Change Password	12345678
Rear Recording in	On	Firmware Upgradable	Yes
Driving Impact	LOW	Safety Camera DB Upgrade	Off
Parking Impact	HIGH	System Information	2
Front Motion	MID	Reset	
Rear Motion	MID	ADAS (Driver Assist)	
Voice Recording	Off		
Speaker Volume	2		
Event Notification	Off		
Standard Time	+10:00 Sydney		
Daylight Saving Time	Off		
Time Setting	2023-08-01 09:41:12		
Memory Allocation	Driving Priority		