

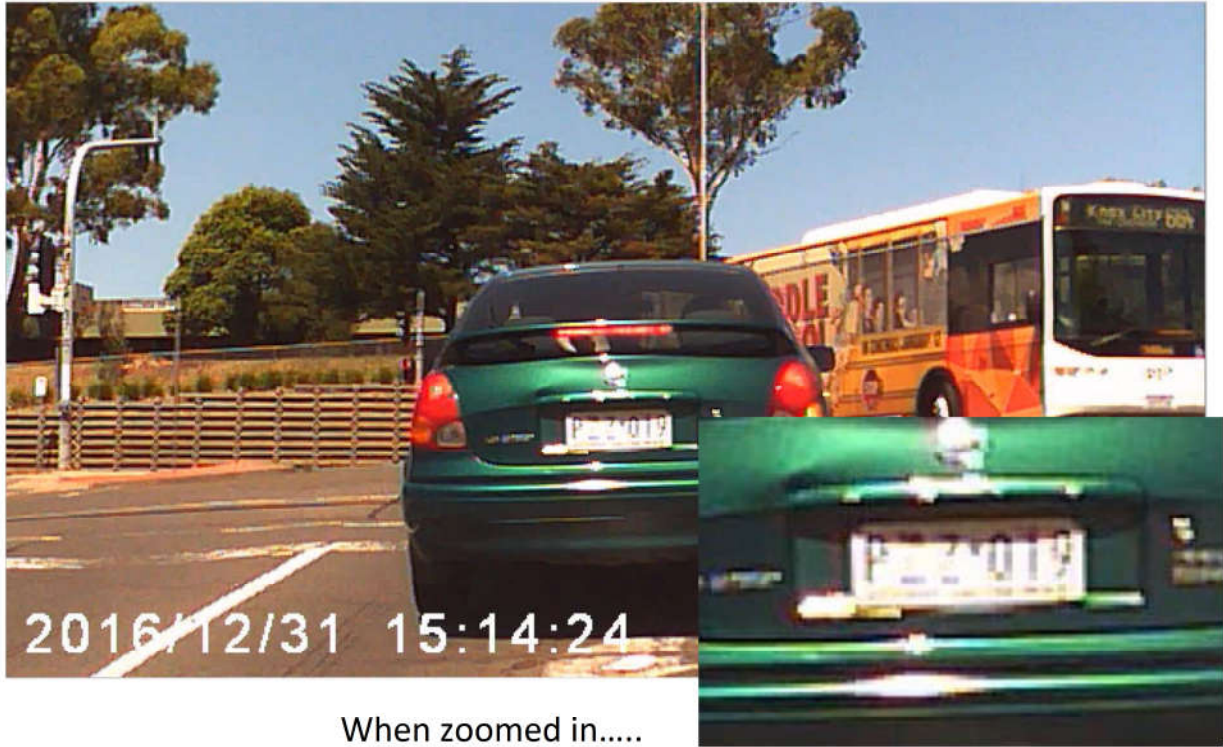
These photos are all shot over a two week period from two cameras mounted side by side in the same vehicle. There have been NO photo shopping enhancements of any sort made.

Please note while viewing these pictures; cheaper cameras give a “zoomed in” appearance due to the lack of more expensive wide angle lenses.

Speed Signs

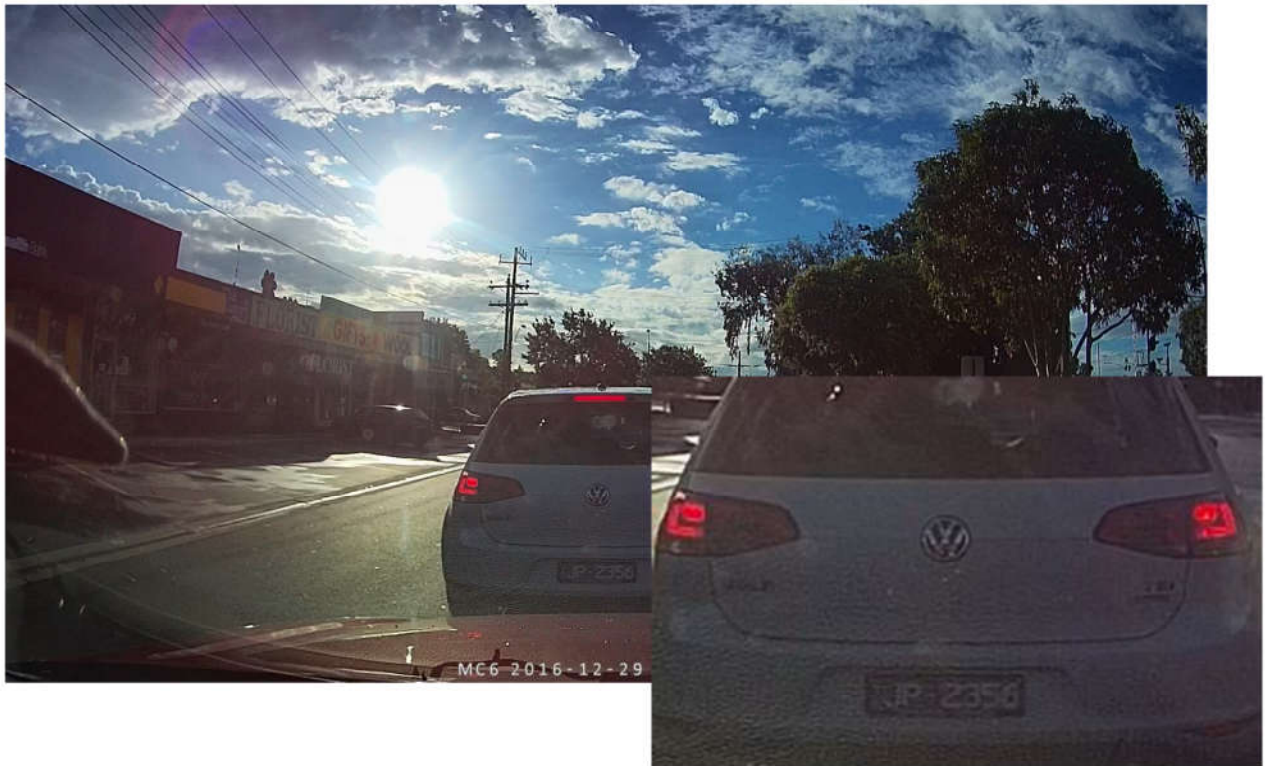
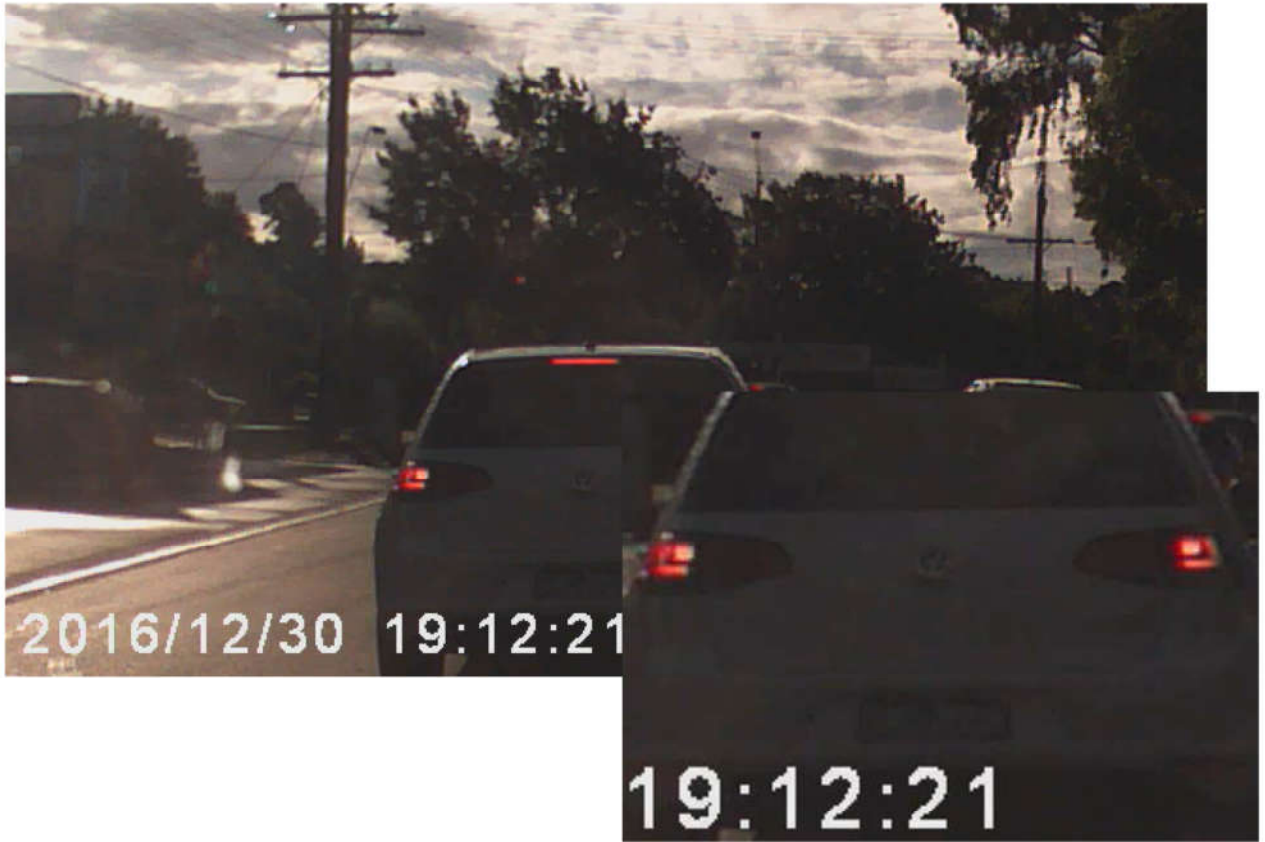


Number Plate Recognition

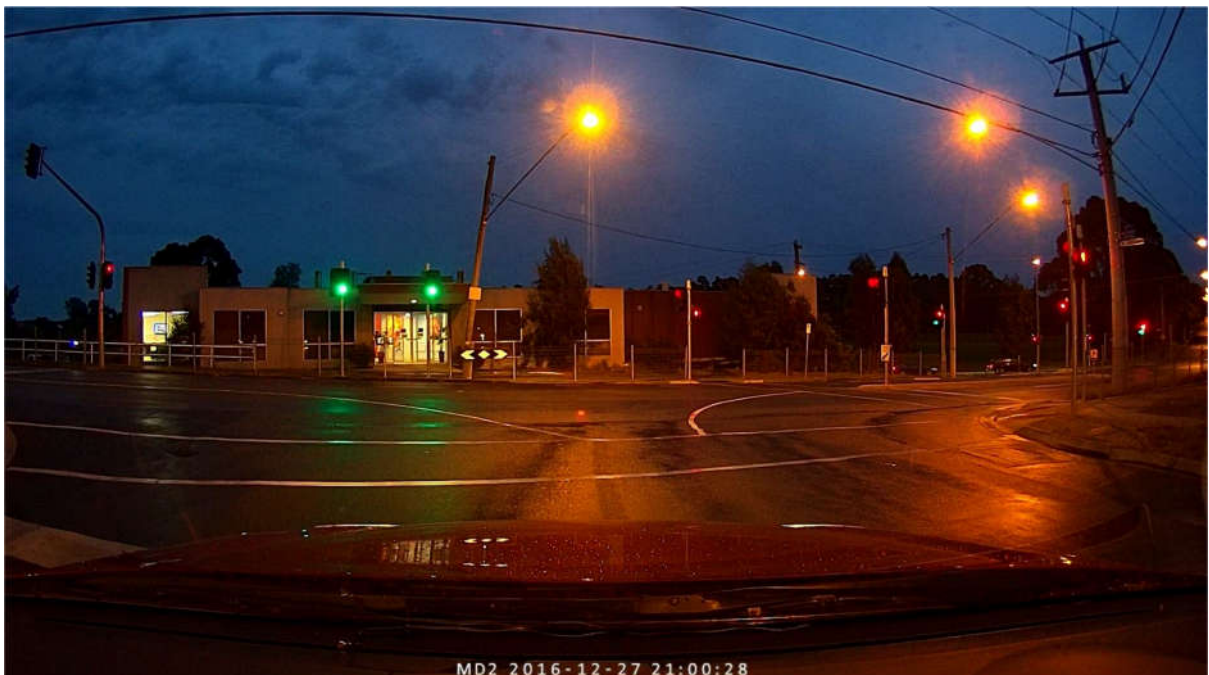


Being able to read a number plate is a critical function of a dashcam.

Sun Glare



Night



A common difference between all good cameras and all cheap cameras is night time performance. A cheap camera is a waste of money if it can't perform in low light. Please note these two images taken a few seconds apart.

View Width



Good quality six layer glass wide angles lenses are more expensive than cheap plastic ones. The end result is a narrow “zoomed in” appearance with much of the image simply missing. Once again, both shots from exactly the same spot.

Colour Quality



Many people love to video blog their trips and family outing on the dashcam. Colour and image quality are undeniably important here.